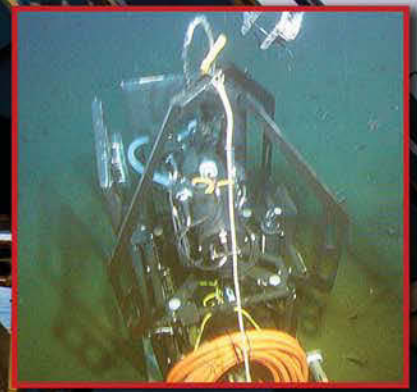


**NEW  
STYLE**

# ROV PRODUCTS

For efficient load handling and attachment by Remote Operating Vehicles in subsea and other hard-to-reach applications.



G-209RP with  
"F" Style Handle



G-209RP with  
"D" Style Handle



Developed in conjunction with major North Sea subsea operations.

**United States**  
P.O. Box 3128  
Tulsa, OK 74101-3128  
P: (918) 834-4611  
F: (918) 832-0940  
crosbygroup@thecrosbygroup.com

**Canada**  
145 Heart Lake Rd.  
Brampton, Ontario  
Canada L6W 3K3  
P: (905) 451-9261  
F: (877) 260-5106  
sales@crosby.ca

**Europe**  
Industriepark Zone b N°26  
2220 Heist-op-den-Berg  
Belgium  
P: (+32) (0)15 75 71 25  
F: (+32) (0)15 75 37 64  
sales@crosbyeurope.com

**theCrosbygroup**  
www.thecrosbygroup.com

**Load Rated**



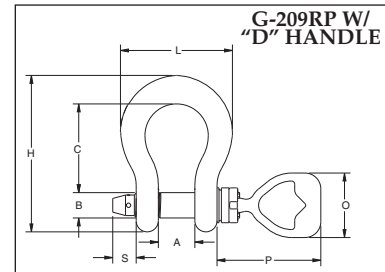
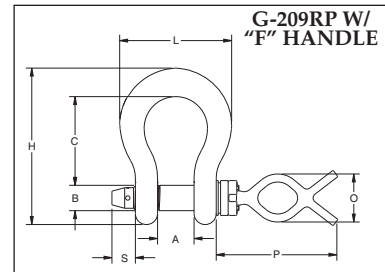
**APPLICATION INSTRUCTIONS**  
SEE THE CROSBY GENERAL CATALOG

**G-209RP SUBSEA SHACKLES WITH "D" OR "F" STYLE HANDLE**



G-209RP with "D" Style Handle Shown

- Capacities from 8-1/2t through 55t.
- Forged Steel, Quenched & Tempered, with alloy pins.
- Two styles of interchangeable handles, "D" and "F" that are stainless steel.
- Working Load Limit permanently shown on every shackle.
- **QUIC-CHECK**® deformation and angle indicators forged on the bow.
- All ROV shackle bows are galvanized, then painted fluorescent yellow.
- Handles are painted fluorescent orange.
- Pins are galvanized then painted red.
- Interchangeable handles on ROV shackle pins available as assembly kits.
- "D" and "F" handle kits available containing handle, retaining bolts and thread locking compound for easy installation.
- Handles as **RFID** equipped.
- Look for the Red Pin® . . . the mark of genuine Crosby quality.



**G209RP Subsea Shackles**

| Working Load Limit (t)* | G-209R with "F" Style Handle Dimensions (in.) |           |      |       |       |       |      |       |      |      | G-209R with "D" Style Handle Dimensions (in.) |           |      |       |       |       |      |      |      |      |
|-------------------------|---|-----------|------|-------|-------|-------|------|-------|------|------|---|-----------|------|-------|-------|-------|------|------|------|------|
|                         | Weight Each (lbs.)                            | A +/- .25 | B    | C     | H     | L     | O    | P     | S    | T    | Weight Each (lbs.)                            | A +/- .25 | B    | C     | H     | L     | O    | P    | S    | T    |
| 8-1/2                   | 7.7   | 1.69      | 1.13 | 3.75  | 6.56  | 4.69  | 3.79 | 8.66  | 1.23 | 0.63 | 8.3   | 1.69      | 1.13 | 3.75  | 6.56  | 4.69  | 5.09 | 7.25 | 1.23 | 0.63 |
| 9-1/2                   | 9.8   | 1.81      | 1.25 | 4.25  | 7.47  | 5.16  | 3.79 | 8.66  | 1.23 | 0.63 | 10.4  | 1.81      | 1.25 | 4.25  | 7.47  | 5.16  | 5.09 | 7.25 | 1.23 | 0.63 |
| 12                      | 12.4  | 2.03      | 1.38 | 4.69  | 8.25  | 5.75  | 3.79 | 8.66  | 1.30 | 0.63 | 12.9  | 2.03      | 1.38 | 4.69  | 8.25  | 5.75  | 5.09 | 7.25 | 1.30 | 0.63 |
| 13-1/2                  | 15.6  | 2.25      | 1.50 | 5.25  | 9.16  | 6.38  | 3.79 | 8.66  | 1.40 | 0.63 | 16.2  | 2.25      | 1.50 | 5.25  | 9.16  | 6.38  | 5.09 | 7.25 | 1.40 | 0.63 |
| 17                      | 18.5  | 2.38      | 1.63 | 5.75  | 10.00 | 6.88  | 3.79 | 9.60  | 1.79 | 0.63 | 19.1  | 2.38      | 1.63 | 5.75  | 10.00 | 6.88  | 5.09 | 8.19 | 1.79 | 0.63 |
| 25                      | 34.1  | 2.88      | 2.00 | 7.00  | 12.34 | 8.80  | 3.79 | 9.60  | 1.85 | 0.63 | 34.7  | 2.88      | 2.00 | 7.00  | 12.34 | 8.80  | 5.09 | 8.19 | 1.85 | 0.63 |
| 35                      | 48.5  | 3.25      | 2.25 | 7.75  | 13.68 | 10.15 | 3.79 | 9.78  | 1.94 | 0.63 | 49.1  | 3.25      | 2.25 | 7.75  | 13.68 | 10.15 | 5.09 | 8.37 | 1.94 | 0.63 |
| 55                      | 95.2  | 4.13      | 2.75 | 10.50 | 17.90 | 12.74 | 3.79 | 10.16 | 2.06 | 0.63 | 95.8  | 4.13      | 2.75 | 10.50 | 17.90 | 12.74 | 5.09 | 8.75 | 2.06 | 0.63 |

\* Minimum Ultimate Load is 5 times the Working Load Limit.



WLL: 8.5-13.5t

WLL: 17-55t



G-4209R-'F' Handle



G-4209R-'D' Handle

| Working Load Limit (t)* | G-209RP Bow with Pin (less Handle) |                   | G-4209R Handle Only  |                    |                      |                    | G-4209RFB "F" Pin Assembly |                    | G-4209RDB "D" Pin Assembly |                    |
|-------------------------|------------------------------------|-------------------|----------------------|--------------------|----------------------|--------------------|----------------------------|--------------------|----------------------------|--------------------|
|                         | Stock No.                          | Weight Each (lbs) | "F" Handle Stock No. | Weight Each (lbs.) | "D" Handle Stock No. | Weight Each (lbs.) | Stock No.                  | Weight Each (lbs.) | Stock No.                  | Weight Each (lbs.) |
| 8-1/2                   | 1021200                            | 1.2               | 1021085              | 2.8                | 1021094              | 3.5                | 1020638                    | 4.0                | 1020816                    | 4.7                |
| 9-1/2                   | 1021208                            | 1.7               |                      |                    |                      |                    | 1020647                    | 4.5                | 1020825                    | 5.2                |
| 12                      | 1021217                            | 2.2               |                      |                    |                      |                    | 1020656                    | 5.0                | 1020834                    | 5.7                |
| 13-1/2                  | 1021226                            | 2.9               |                      |                    |                      |                    | 1020665                    | 5.7                | 1020843                    | 6.4                |
| 17                      | 1021235                            | 5.1               |                      |                    |                      |                    | 1020674                    | 7.9                | 1020852                    | 8.6                |
| 25                      | 1021244                            | 8.0               |                      |                    |                      |                    | 1020683                    | 10.8               | 1020861                    | 18.8               |
| 35                      | 1021253                            | 11.2              |                      |                    |                      |                    | 1020692                    | 14.0               | 1020870                    | 25.2               |
| 55                      | 1021262                            | 21.2              |                      |                    |                      |                    | 1020709                    | 24.0               | 1020889                    | 45.2               |

\* Minimum Ultimate Load is 5 times the Working Load Limit.

The new Crosby SubSea shackles are designed in a way to allow multiple handle styles to be used with each size of shackles bow. To ensure the proper components are selected, please use the following steps.

- STEP 1** - Determine the Working Load Limit (WLL) of the desired shackle.
- STEP 2** - Select the G-209RP bow with pin (less handle) that corresponds to the desired WLL.
- STEP 3** - Select the G-4209R handle that best meets your requirements.
- STEP 4** - When placing the order through your local authorized Crosby dealer, reference the corresponding stock numbers associated with the items selected in Steps 2 and 3 above.