

Real Life Solutions

Making the best even better!

Select Sizes of Crosby G-2140 Alloy Bolt Type Anchor Shackles and G-2160 Wide Body Shackles, our “Heavy Lift” shackles, have been enhanced by utilizing the recently patented Crosby Easy-Loc[®] Bolt securement system

Crosby Easy-Loc[®]

The G-2140E in capacities from 200-300 metric tons and G-2160E in capacities 125-300 metric tons now come standard with the innovative Crosby Easy-Loc[®] System, eliminating the need for the bolt, nut and cotter pin assembly. This feature, although enhancing your lifting experience, does not change any of the features and fit up specifications (between the ears) of the industry standard G-2140 and G-2160 shackles.



G-2140E

For Heavy lifting applications, shackles fitted with the Crosby Easy-Loc[®] Bolt Securement System provide many features that will simplify the lifting experience as follows:

- Ease of installation
 - No heavy nuts to lift
When compared to the nuts used with traditional system, the hinged collar provides up to a 70% weight reduction.
 - Eliminates loss of cotter pin
The hinged split collar “retention bolt” is permanently affixed for easy access and to prevent loss.
- No more damaged shackle bolt threads.



G-2160E



scan our QR Code
with your smart
device to visit
the online catalog

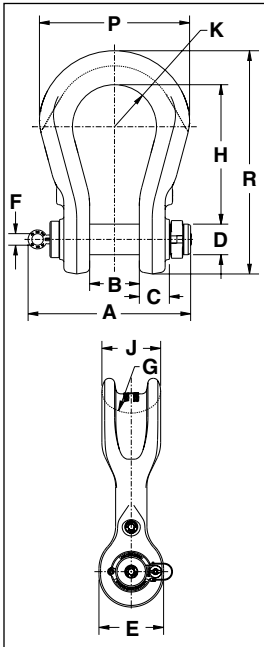
the Crosby[®] group
www.thecrosbygroup.com

Real Life Solutions



Crosby Easy-Loc bolt securement system is a standard feature on the following Crosby shackles.

- Bows and Pins are RFID equipped.
- Selected sizes can be outfitted with Crosby hoist ring for easy lifting.



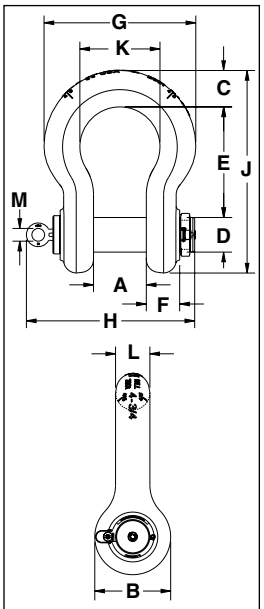
G-2160E Crosby® "Wide Body" Shackles - Imperial

Working Load Limit (t)*	Stock No. G-2160E	Weight Each (lbs.)	Dimensions (in.)													Effective Body Diameter	Availability
			A	B +/- .25	C	D +/- .02	E	F	G	H	J	K	P	R			
125	1021309	187	16.75	5.12	3.50	3.15	6.50	1.19	3.75	14.36	5.91	4.33	15.47	23.00	6.8	Q4 12	
200	1021320	401	19.76	5.91	4.94	4.12	8.41	1.75	5.25	18.90	8.63	5.41	20.47	30.44	9.5	Q4 12	
300	1021330	777	23.05	7.38	5.63	5.25	10.50	1.75	6.13	23.63	10.38	6.31	23.83	37.51	11.4	Q2 13	

G-2160E Crosby® "Wide Body" Shackles - Metric

Working Load Limit (t)*	Stock No. G-2160E	Weight Each (kg)	Dimensions (mm)													Effective Body Diameter	Availability
			A	B +/- 6.35	C	D +/- .5	E	F	G	H	J	K	P	R			
125	1021309	85	425	130	88.9	80.0	165	30.2	95.3	365	150	110	393	584	173	Q4 12	
200	1021320	182	502	150	125	105	214	44.5	133	480	219	137	520	773	241	Q4 12	
300	1021330	352	585	187	143	133	267	44.5	156	600	264	160	605	953	290	Q2 13	

* 125t-300t Proof Load is 2 times the Working Load Limit. Ultimate Load is 5 times the Working Load Limit.
 400t-1550t Proof Load is 1.33 times the Working Load Limit. Ultimate Load is 5 times the Working Load Limit.
 Bold type indicates sizes available.



G-2140E Crosby® Alloy Bolt Type Shackles - Imperial

Nominal Shackle Size (in.)	Working Load Limit (t)*	Stock No. G-2140E	Weight Each (lbs.)	Dimensions (in.)												Tolerance +/-		Availability
				A	B	C	D	E	F	G	H	J	K	L	M	A	E	
4-3/4	† 200	1021422	452	7.25	10.50	5.00	4.75	15.19	4.58	20.84	23.11	27.81	11.00	4.75	1.75	.25	.25	Q1 13
5**	† 250	1021442	594	8.50	12.00	5.63	5.00	18.50	4.48	23.63	24.28	32.63	13.00	5.00	1.75	.25	.25	Q2 13
6	† 300	1021460	791	8.38	13.00	6.06	6.00	18.72	4.89	24.76	25.45	34.28	13.00	5.88	1.75	.25	.25	Q1 13

G-2140E Crosby® Alloy Bolt Type Shackles - Metric

Nominal Shackle Size (in.)	Working Load Limit (t)*	Stock No. G-2140E	Weight Each (kg)	Dimensions (mm)												Tolerance +/-		Availability
				A	B	C	D	E	F	G	H	J	K	L	M	A	E	
4-3/4	† 200	1021422	205	184	267	127	121	386	116	529	587	706	279	121	44	6.4	6.4	Q1 13
5	† 250	1021442	269	216	305	143	127	470	114	600	617	829	330	127	44	6.4	6.4	Q2 13
6	† 300	1021460	359	213	330	154	152	475	124	629	646	871	330	149	44	6.4	6.4	Q1 13

* Note: Maximum Proof Load is 2.0 times the Working Load Limit. Minimum Ultimate Load is 5.4 times the Working Load Limit on 200 thru 400 metric Tons.
 ** Cast Alloy Steel.
 † Furnished with Round Head Bolts with an eyebolt for handling.
 For Working Load Limit reduction due to side loading applications, see page 80 of the Crosby General Catalog.
 Bold type indicates sizes available.