

Another Real Life Solution by the Heavy Lift Specialist!

Crosby's new **G-2170 Grommet Shackle** series is intended for those lifting applications that require high capacity with limited or tight headroom, such as chemical plants, refineries, interstate highway construction and offshore derrick barge cranes.



- Provides a bearing surface that is at least 5 times that of a round shackle.
- Increases the usable sling strength minimum by 60% and greatly improves life of the grommet sling.
- Designed for use with single or double large diameter grommets.
- All sizes are RFID equipped in bow and pin.
- Utilizes new **Crosby Easy-Loc** Bolt Securement System.



Scan our QR Code with your smart device to visit the online catalog.

the **Crosby** group

www.thecrosbygroup.com



Load Rated®

Crosby® Grommet Shackle

- All sizes Quenched and Tempered for maximum strength.
- All sizes cast alloy steel.
- Sizes 300 metric tons and smaller are proof tested to 2 times the Working Load Limit.
- All ratings are in metric tons, embossed on side of bow.
- G-2170 bows are furnished Dimetcoated and pins are Dimetcoated, then painted red.
- All sizes are RFID Equipped in bow and pin.
- Designed for use with single or double large diameter grommets.
- Extra large sling contact area improves efficiency of the grommet sling.
- Utilizes new **Crosby Easy-Loc** shackle bolt system.
- Large machined flat on ears that can be drilled and tapped for adapting other accessories.
- HR-1000 Hoist Ring in Bow available for easy transporting.
- Provides a bearing surface that is at least 5 times that of a round shackle.
- Increases usable sling strength minimum of 60% and greatly improves life of grommet slings.
- Bow and bolt are certified to meet charpy impact testing of 42 joules (31 ft-lbs.) min. ave. at -20 degree C (-4 degree F).
- All 2170 shackles are individually proof tested and magnetic particle inspected. Crosby certification available at time of order.
- Shackles requiring ABS, Lloyds, and other certifications are available upon special request and must be specified at time of order.
- All 2170 shackles can meet requirements of DNV Standard for Certification of Lifting Appliances upon special request and must be specified at time of order.
 - Serialization / Identification • Material Testing (Physical / Chemical / Charpy) • Proof Testing
- Look for the Red Pin®....the mark of genuine Crosby quality.



**G-2170
GROMMET
SHACKLE**

G-2170 Crosby® Grommet Shackles - Imperial

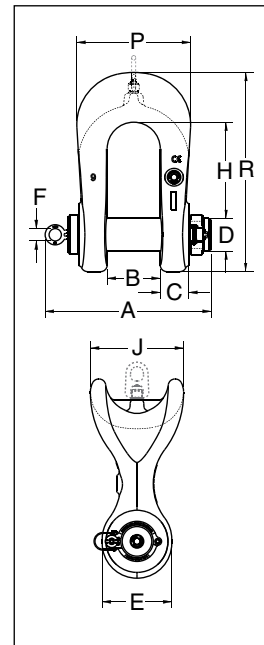


Load Rated



| Working Load Limit (t)* | Stock No. | Weight Each (lbs.) | Dimensions (in.) | | | | | | | | | | Effective Body Diameter |
|-------------------------|-----------|--------------------|------------------|-----------|------|-----------|-------|------|-------|-------|-------|-------|-------------------------|
| | | | A | B +/- .02 | C | D +/- .02 | E | F | H | J | P | R | |
| 75 | 1022075 | 113 | 14.08 | 4.13 | 2.39 | 2.75 | 5.50 | 1.19 | 7.77 | 7.50 | 9.50 | 16.20 | 11.25 |
| 125 | 1022084 | 176 | 16.05 | 5.13 | 2.75 | 3.15 | 6.72 | 1.19 | 9.31 | 9.00 | 11.00 | 19.25 | 13.50 |
| 200 | 1022093 | 368 | 19.13 | 5.91 | 3.39 | 4.12 | 9.00 | 1.75 | 11.64 | 12.90 | 13.63 | 25.01 | 18.45 |
| 300 | 1022100 | 686 | 22.44 | 7.38 | 4.30 | 5.25 | 11.13 | 1.75 | 15.20 | 15.50 | 17.00 | 31.82 | 22.75 |

* Sizes 75-300 metric tons are proof tested to 2 times the Working Load Limit. Ultimate Load is 5 times the Working Load Limit. For Working Load Limit reduction due to side loading applications, see the General Catalog.



G-2170 Crosby® Grommet Shackles - Metric

| Working Load Limit (t)* | Stock No. | Weight Each (kg.) | Dimensions (mm) | | | | | | | | | | Effective Body Diameter |
|-------------------------|-----------|-------------------|-----------------|-----------|------|-----------|-----|------|-----|-----|-----|-----|-------------------------|
| | | | A | B +/- .02 | C | D +/- .02 | E | F | H | J | P | R | |
| 75 | 1022075 | 51.26 | 358 | 105 | 60.7 | 69.9 | 140 | 30.2 | 197 | 191 | 241 | 411 | 286 |
| 125 | 1022084 | 79.83 | 408 | 130 | 69.9 | 80.0 | 171 | 30.2 | 236 | 229 | 279 | 489 | 343 |
| 200 | 1022093 | 166.9 | 486 | 150 | 86.1 | 105 | 229 | 44.4 | 296 | 328 | 346 | 635 | 469 |
| 300 | 1022100 | 311.1 | 570 | 187 | 109 | 133 | 283 | 44.4 | 386 | 394 | 432 | 808 | 578 |

* Sizes 75-300 metric tons are proof tested to 2 times the Working Load Limit. Ultimate Load is 5 times the Working Load Limit. Ultimate Load is 4.5 times the Working Load Limit. For Working Load Limit reduction due to side loading applications, see the General Catalog.